

ESU.150

EDISWAN

ESU.150

HALF-WAVE MERCURY VAPOUR RECTIFIER

GENERAL

Hot Cathode Half-Wave Rectifier. Care must be taken in installation to ensure free circulation of air around the bulb in order that the temperature limits are not exceeded. When the rectifier is first placed in service, the filament should be operated at normal voltage for 15 minutes without anode voltage in order to obtain correct distribution of the mercury.

RATING

Filament Voltage (volts)	V_f	4.0
Filament Current (amps)	I_f	10.0
Maximum Peak Inverse Anode Voltage (volts)	P.I.V.(max)	10,000
Maximum Peak Anode Current (amps)	$I_a(pk)max$	1.8
Maximum Average Anode Current (mA)	$I_a(av)$	350
Ambient Temperature Range		$10^{\circ} - 50^{\circ} C$
Cathode Heating Delay Time (secs)		60

DIMENSIONS

Maximum Overall Length (mm)	200
Maximum Diameter (mm)	57
Approximate Nett Weight (ozs)	4
Approximate Packed Weight (ozs)	5
Approximate Packed Export Weight (lbs.)	$3\frac{3}{4}$

MOUNTING POSITION - Vertical

EDISWAN

ESU.150

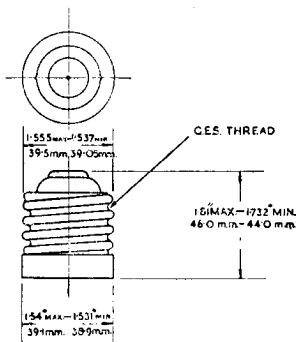
HALF-WAVE MERCURY VAPOUR RECTIFIER

BASE G.E.S.

TOP CAP Insulated Screw Type

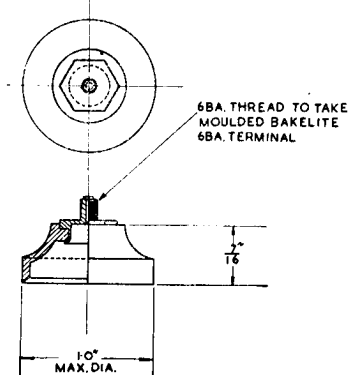
FILAMENT CAP

BASE P1102



THIS IS THE STANDARD EDISON GOLIATH SCREW CAP F.4045

MOULDED CAP P2100



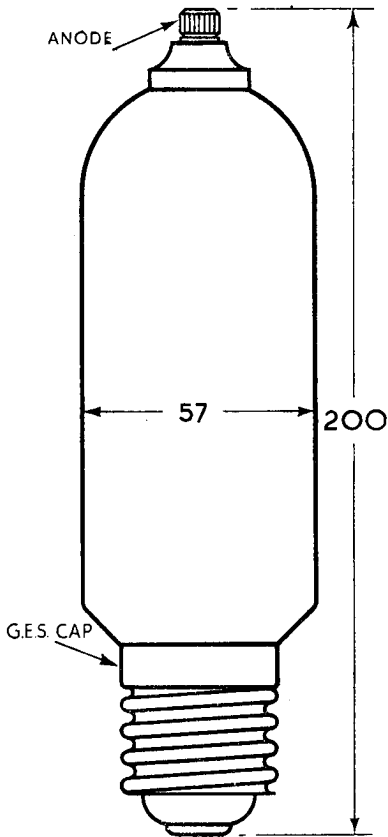
ALL DIMS IN mm. UNLESS STATED OTHERWISE

ESU.150

EDISWAN

ESU.150

HALF-WAVE MERCURY VAPOUR RECTIFIER



ALL DIMENSIONS IN M.M.