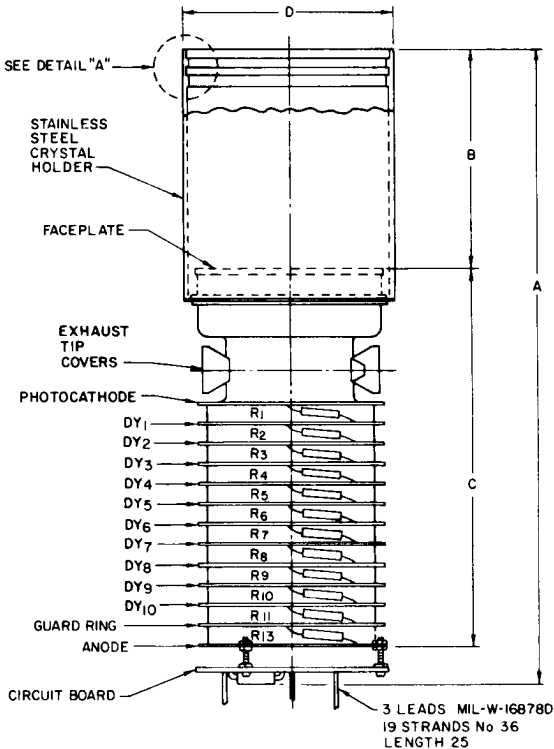


Photomultiplier Tube

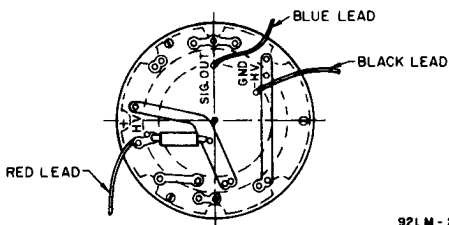
RCA-8664/VI is a variant of type 8664 incorporating in its design a scintillation-crystal holder and a voltage-divider network. Ratings and characteristics for the 8664/VI are the same as shown for type 8664.

DIMENSIONAL OUTLINE (Front View)



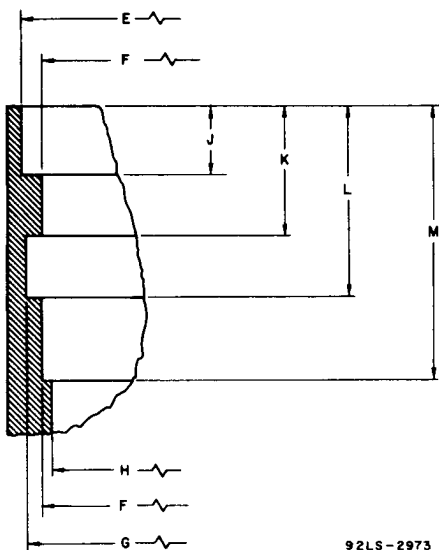
8664/VI

DIMENSIONAL OUTLINE (Bottom View)



92LM-2977

DETAIL "A"



92LS-2973

OUTLINE DIMENSIONS

Dimensions	Inches	mm
A	6.99 Max.	177.5 Max.
B	2.352 ± .005	59.740 ± .127
C	4.00 Max.	102 Max.
D	2.250 ± .010 Dia.	57.15 ± .25 Dia.
E	2.210 ± .005 Dia.	56.134 ± .127 Dia.
F	2.150 ± .005 Dia.	54.610 ± .127 Dia.
G	2.190 ± .005 Dia.	55.626 ± .127 Dia.
H	2.120 Dia.	53.85 Dia.
J	.098 ± .005	2.499 ± .127
K	.188 ± .005	4.775 ± .127
L	.280 ± .005	7.112 ± .127
M	{ .406 ± .030 - .000	{ 10.31 ± .76 - .00

PARTS LIST FOR ACCOMPANYING TYPICAL VOLTAGE-DIVIDER ARRANGEMENT

C_1 : 0.005 μ F, 20%, 1000 V dc, ceramic disc

C_2 : 0.01 μ F, 20%, 1000 V dc, ceramic disc

C_3, C_4 : 0.01 μ F, 20%, 3000 V dc, ceramic disc

R_1 : 22 M Ω , 5%, 1/2 Watt

R_2 through R_{10} : 8.2 M Ω , 5%, 1/2 Watt

R_{11} : 2.4 M Ω , 5%, 1/2 Watt

R_{12} : 1 M Ω , 5%, 1/2 Watt

R_{13} : 1.1 M Ω , 5%, 1/2 Watt

R_{14} : 10 M Ω , 5%, 1/2 Watt

TYPICAL VOLTAGE-DIVIDER ARRANGEMENT

