

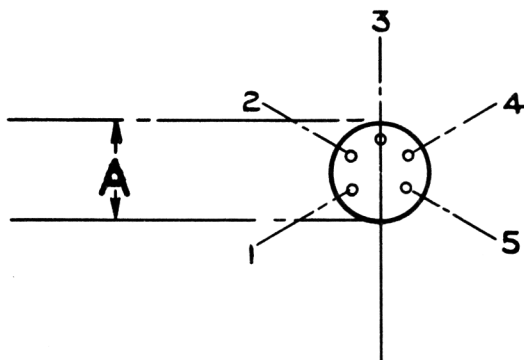
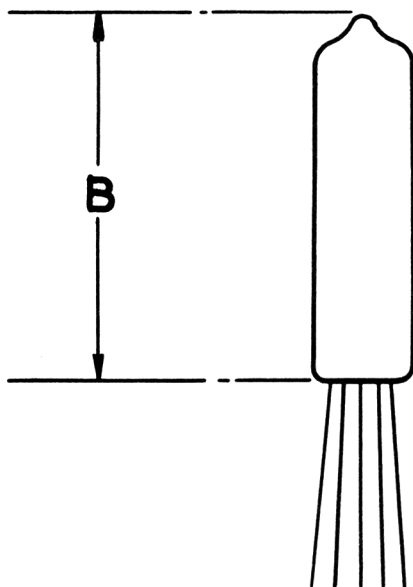
TESTS

To be performed in addition to those applicable in K1001

	Test Conditions			Test	Limits		No. Tested	Note
					Min.	Max.		
a	See K1001/A111			<u>CAPACITANCES (pF)</u>			6 per week	1
	Links to H.P.	Links to L.P.	Links to E					
	2,5	1,3,4, sh.	-					
	3	1,2,4,5, Sh.	-					
b	Vh 4.0	Va -		Ih (mA)	210	250	100%	
c	4.0	5		Ia (mA)	20	-	100%	
d	4.0	Resistance between cathode and Anode 40K ohms		Ia (μA)	5	25	100%	
e	4.0	- 100		Anode-all Leakage (μA)	-	5	100%	
f	4.0	<u>Vh, k</u> (1) 20V D.C. (Cathode positive) (2) 90V D.C. (Cathode positive) (3) 90V D.C. (Cathode negative)		Ih, k (μA)	-	1.0 4.5 9.0	100% 100% 100%	2 2 2

NOTES

1. Measured with a close fitting metal shield. Connections refer to valve pins. All shall be measured at a frequency of at least 1.0 Mc/s.
2. See K1001/5.3 except that the voltages and limits shall be as shown.



BULB STRAIGHTNESS TEST.

THE FINISHED VALVE MUST PASS THROUGH
A CYLINDRICAL GAUGE OF LENGTH AT LEAST
EQUAL TO THAT OF THE BULB. I.D. OF
CYLINDER=0.218 INCH MAX.