

Specification MAP/CV1507/Issue 7

Dated 9.1.46.

To be read in conjunction

with K1001, ignoring clauses:- 5.2, 5.8.

SECURITYSpecification

RESTRICTED

Valve

RESTRICTED

—→ Indicates a change

TYPE OF VALVE - Gas Filled Spark GapMARKING

See K1001/4

RATING

Max. Striking voltage (V)

1250

BASE

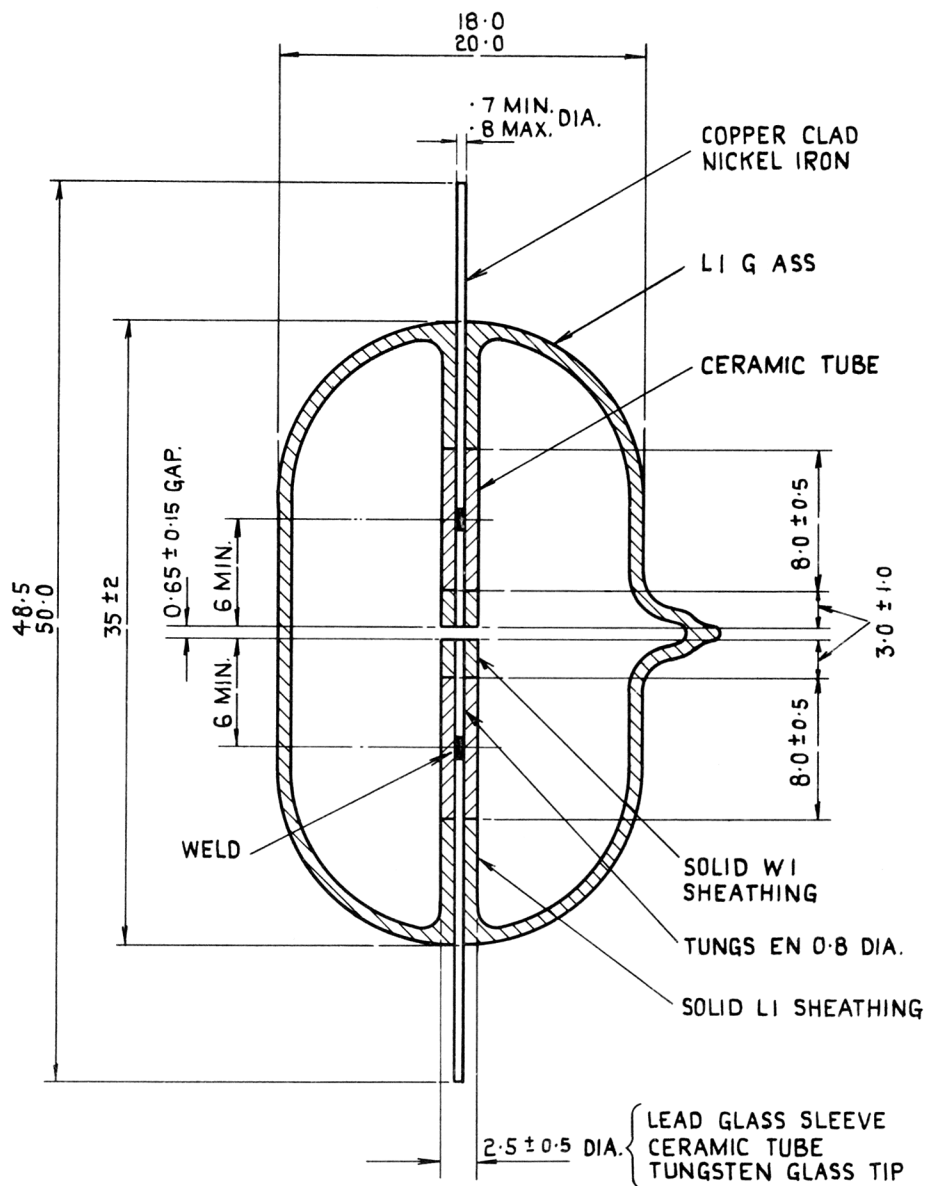
None

DIMENSIONS

See drawing on page 2.

REQUIREMENTSGlass Envelope - Lead glass throughout.Sleeving - Lead (L1) glass adjoining the envelope.
Ceramic centre section. Tungsten (W1) glass tips.Gas Filling - Argon 600 mm. \pm 20 mm. plus approx.
5 mg. mercury.Electrodes - Tungsten welded to lead wires.
The ends must be cut square and no
wire must protrude beyond the glass tip.Lead wires - Copper-clad nickel-iron.TESTS

	Test Conditions	Test	Limits		No. Tested
			Min.	Max.	
a	After 2 weeks shelf test, increase the applied D.C. voltage until spark occurs.	Striking Voltage (V)	-	1250	100%



NOTE :- THE ALIGNMENT OF THE TUNGSTEN ELECTRODES
MUST BE SUCH THAT THERE IS NOT MORE THAN 0.25 mm
BETWEEN THEIR CENTRES AT THE GAP.

ALL DIMENSIONS IN MILLIMETRES.