

MINISTRY OF SUPPLY - D.L.R.D./R.A.E.

Specification MOS/GV.1377	<u>SECURITY</u>	
Issue 2 Dated 13.1.58.	<u>Specification</u>	<u>Valve</u>
To be read in conjunction with B.S.448, B.S.1409 and K.1001.	UNCLASSIFIED	UNCLASSIFIED

—————→ Indicates a change.

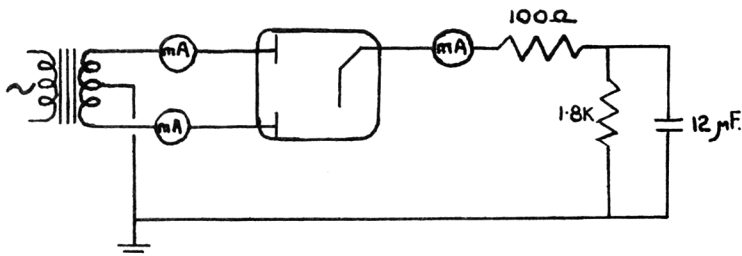
TYPE OF VALVE - High vacuum Full Wave Rectifier				<u>MARKING</u> See K1001/4			
CATHODE - Indirectly heated							
ENVELOPE - Glass, unmetallised				<u>BASE</u> B.S.448/B8-0			
PROTOTYPE - GZ.34							
<u>RATING</u> (All limiting values are absolute)				<u>CONNECTIONS</u>			
				Note	Pin	Electrode	
Heater Voltage	(V)	5.0			1	Int. Con.	IC
Heater Current	(A)	1.9			2	Heater	h
Max. Peak Inverse Voltage	(V)	1650			3	No Con.	NC
Max. Peak Anode Current	(mA)	760	A		4	Anode (1)	a'
Max. Surge Anode Current	(A)	4.0	A		5	No Con.	NC
Max. Mean d.c. Anode Current	(mA)	140	A		6	Anode (2)	a"
Max. Reservoir Condenser	(μF)	120			7	No Con.	NC
					8	Heater Cathode	h + k
<u>Typical Operating Conditions</u>				<u>DIMENSIONS</u> See K.1001 AI DI			
Anode Volts	(Vrms)	2 x 450			Dimensions (mm)		Min. Max.
Output Current	(mA)	250					
Capacitance	(μF)	60					
Minimum limiting resistance	(Ω)	125	A		B diameter	-	38
V. out	(V)	450			L seated height	-	72
					A overall length	-	86
				<u>MOUNTING POSITION</u> Any			
<u>NOTES</u>							
A. Each Anode							

Test Conditions			Tests	Limits		No. Tested	Note
				Min.	Max.		
	Vf A.C.	Va A.C.					
a	5.0	0	Heater Current (A)	1.7	2.1	100%	
b	5.0	45 30	Emission (mA)	280 195	500 345	100%	3
c	5.0	450	Output Current (mA)	232	296	100%	1
			Anode 1 Current (mA)	110	154		
			Anode 2 Current (mA)	110	154		
d	5.0	450	Flashover	-	-	100%	2,4

NOTES

- To be tested in a full-wave circuit (as shown below) with Load Resistance = 1800 ohms; Series Resistance = 100 ohms; Capacitor = 12 microfarads.
- Capacitor = 48 microfarads.
- ~~Per Section.~~ 30VAC each Anode
- Current to be switched on and off 6 times. If no flashes are seen the valve is to be considered good. If flashes are seen between the 2nd and 6th time the current is again switched on and off 6 times when no further flashes should be seen.

OUTPUT CURRENT CIRCUIT.



ELECTRONIC VALVE SPECIFICATIONS

SPECIFICATION MOS/CV1377 ISSUE 2 DATED 13.1.58

AMENDMENT NO.1

Page 2 Test Clause (b)

- (a) In the column headed "Test Conditions, Va.A.C." delete "45" and substitute "30"
- (b) In the column headed "Limits, Min and Max" delete "280" and "500" and substitute "195" and "345"
- (c) Note 3 Delete "Per Section" and substitute "30 V.A.C. each Anode"

January, 1963.

T.V.C. for R.A.E.

N.163616

*✓ RAB
24/1/63*