

ADMIRALTY SIGNAL ESTABLISHMENT

Specification AD/CV1265 Issue No.2. Dated 13.6.47. To be read in conjunction with K1001, ignoring clause 5.8.	<table border="1"> <tr> <th colspan="2"><u>SECURITY</u></th></tr> <tr> <td><u>Specfn.</u> Restricted</td><td><u>Valve.</u> Unclassified</td></tr> </table>	<u>SECURITY</u>		<u>Specfn.</u> Restricted	<u>Valve.</u> Unclassified
<u>SECURITY</u>					
<u>Specfn.</u> Restricted	<u>Valve.</u> Unclassified				

<u>TYPE OF VALVE:-</u> High vacuum, half-wave rectifier.		<u>MARKING</u> See K1001/4.	
<u>CATHODE:-</u> Directly heated, oxide coated.		<u>BASE</u> I4 See K1001/AIV/D6	
<u>ENVELOPE:-</u> Glass, clear.			
<u>PROTOTYPE:-</u> U15, RZ1-250.			
		Pin	Electrode
		1	Anode
		2	Filament
		3	Filament
		4	No connection
<u>RATING</u>		<u>DIMENSIONS</u> See K1001/AI/D1	
Filament voltage	(V)	6.0	
Filament current	(A)	2.0	
Max. RMS applied anode voltage	(V)	1,500	
Max. rect. anode current	(mA)	250	
		Dimension	Min. Max.
		A mm.	- 185
		B mm.	- 52
		<u>PACKAGING</u> See K1005.	

TESTS

To be performed in addition to those applicable in K1001.

	Test Conditions		Test	Limits		No. Tested
	Vh (V)			Min.	Max.	
a	6.0		If (A)	1.75	2.25	100%
b	6.0	Valve operated in circuit of Fig. 1 below, with conditions as shown. RL adjusted (measured on meter 'V') to give 250 mA rectified current measured at meter 'A'.	Voltage across RL. (V)	1,200	-	100%

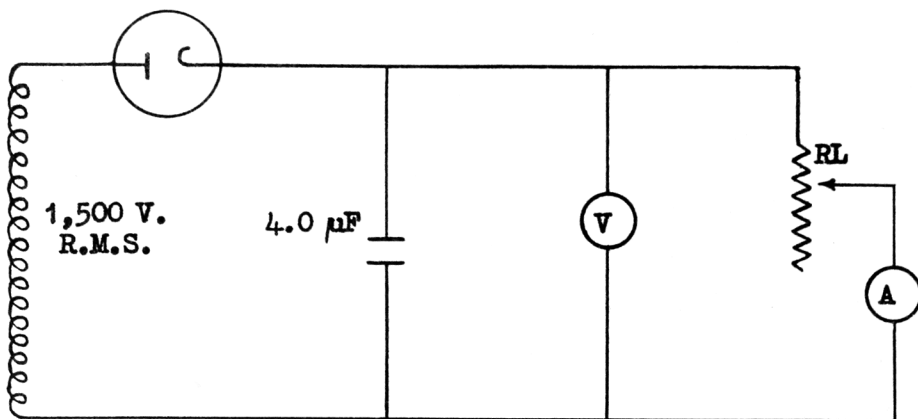


FIG. 1.