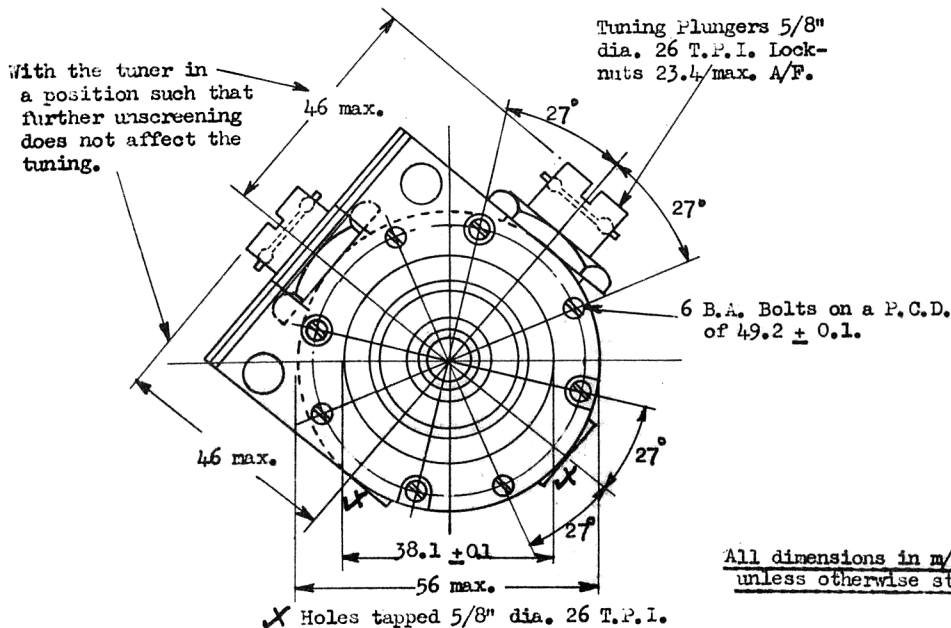
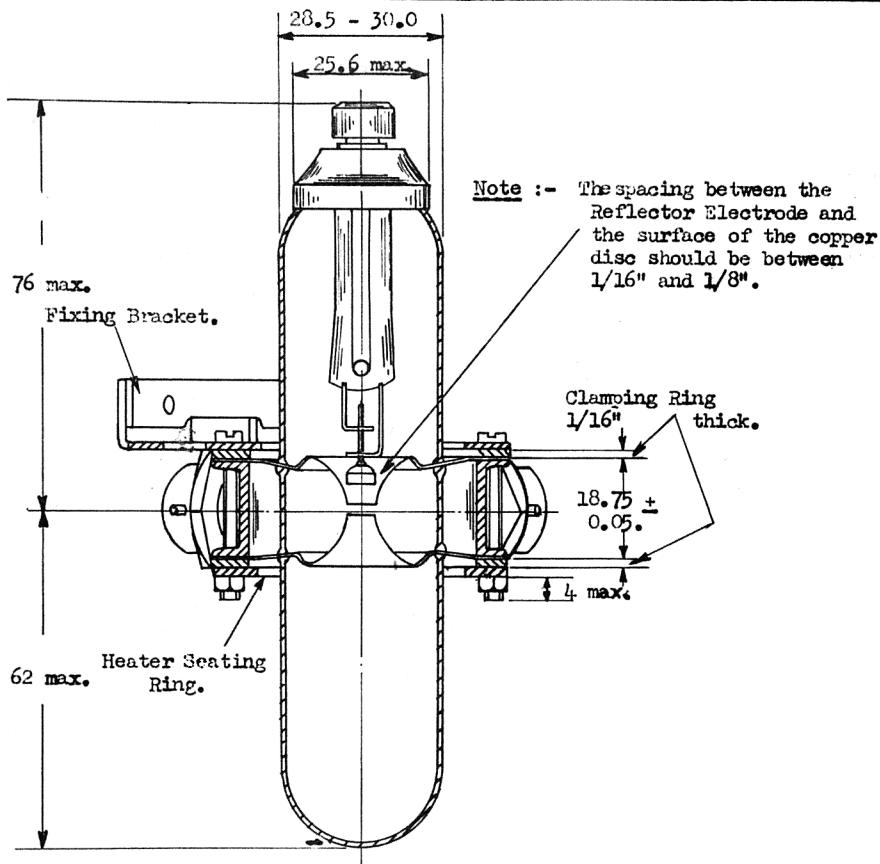


Test Specification No. D.C.D , W.T.1338. Issue No.3.	Date 17th May, 1943	To be read in conjunction with K1001, ignoring clause 5.2.
<u>TYPE OF VALVE</u> :- Gas-filled Resonator Spark Gap.		<u>MARKING</u> CV43
<u>REQUIREMENTS</u>  <u>Gas Filling</u> - Water vapour with a pressure equivalent to 6 mm. of mercury.  <u>Copper Parts</u> - The internal and external copper parts shall be carefully cleaned with acid.  <u>Resonant</u> - The nominal Wavelength <u>Frequency</u> on which the spark gap will operate is 9.1 cm.		<u>BASE</u> None - fixing by means of bracket conforming to Fig.2  <u>DIMENSIONS</u> The dimensions of the valve shall conform to Fig. 1.  <u>TOP CAP</u> Terminal Type threaded 5 B.A.

TESTS

To be performed in addition to those applicable in K1001.

	Test	Limits		No. Tested
		Min.	Max.	
→ a	Wavelength tuning range in centimetres obtained by the adjustment of the two tuners.	8.95	9.25	100%
→ b	After a shelf life of 48 hours, the valve shall be tested with a Tesla coil for air-leak. The colour of the resulting discharge shall be whitish-blue. A tendency to a reddish-purple discharge, indicat- ing too high an air content, shall cause the valve to be rejected.			100%



**MILD STEEL-064" THICK.**

27° 27°

27.4 R.

4 holes 3.05 dia.  
on 49.2 P.C.D.

Hole 38.1 dia.

27°

27°

24.38

27.4

34.9

2 holes  
7.9 dia.

1.0 R.  
Approx.

19.0

44.45

Mild Steel  
Plate 55 x 10  
x .064", or alternatively  
2 H.S. Plates 10 x 10 x .064",  
Spot Welded in position.

0.8 R.

This must  
be square.

12.7

7.9

4

1.0 Rad.  
Approx.

31.75

2 holes tapped 4 B.A.

All dimensions in mm.unless otherwise stated. Limits  
+ 0.10.

MILD STEEL, .064" THICK.

4 slots 6 dia. on 49.2 P.C.D.

