



# HIGH VACUUM RECTIFIER

# 3B24W

(A239)

November 1957 Page 1

Service Type CV2858

American Designation 3B24W

## INTRODUCTION

The 3B24W is a High Vacuum Rectifier with maximum ratings of 20kV peak inverse voltage and 300mA peak current. Small size and extremely rugged construction make this valve suitable for use in aircraft applications and other locations where vibration and shock must be met.

## GENERAL DATA

(See also Preamble to Rectifier Section of this Catalogue)

### Electrical

Filament	..	..	..	..	..	..	..	Thoriated Tungsten
Filament Voltage	..	..	..	..	..	..	..	2.5 or 5.0 V
Filament Current	..	..	..	..	..	..	..	6.0 or 3.0 A
Max Peak Inverse Voltage	..	..	..	..	..	..	..	20.0 kV
Max Anode Current:								
Peak	..	..	..	..	..	..	..	300 mA
Mean	..	..	..	..	..	..	..	60 mA

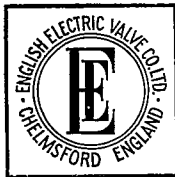
### Mechanical

Overall Length	..	..	..	..	..	..	..	4.80 inches (122 mm)	Max
Overall Diameter	..	..	..	..	..	..	..	1.58 inches (40 mm)	Max
Net Weight	..	..	..	..	..	..	..	2 ounces (57 gm)	Approx
Base	..	..	..	..	..	..	..	..	Medium UX4
Mounting Position	..	..	..	..	..	..	..	.. Vertical, base up or down	
Max Temperature of bulb	..	..	..	..	..	..	..	..	200°C
Cooling	..	..	..	..	..	..	..	..	Natural

If the valve is mounted well clear of other hot bodies and free circulation of cool air is not impeded, then natural cooling should maintain the bulb temperature below the permitted maximum. For this reason the use of a shrouded anode connector is not recommended. If the above conditions cannot be met some form of forced draught should be employed.

**ENGLISH ELECTRIC VALVE CO. LTD.**  
CHELMSFORD ESSEX, ENGLAND TECHNICAL PUBLICATIONS

Printed in England

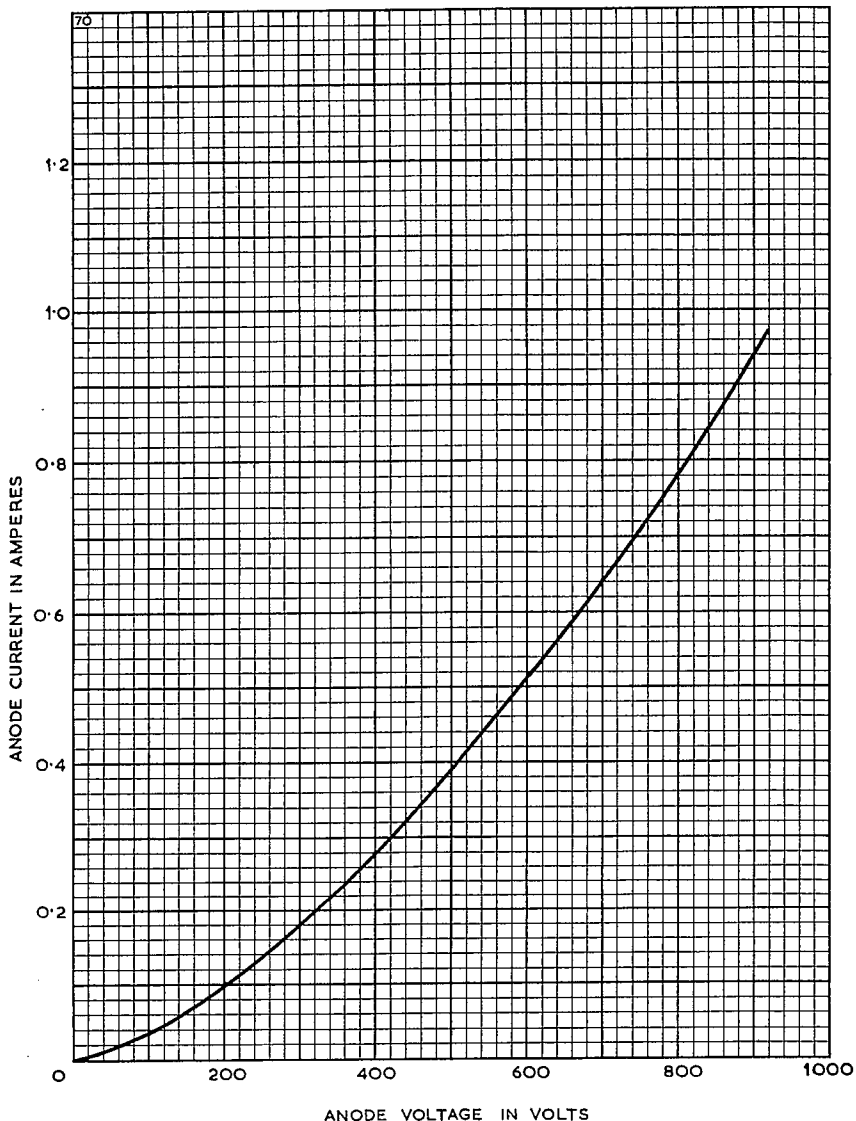


# HIGH VACUUM RECTIFIER

# 3B24W (A239)

November 1957 Page 2

## ANODE CHARACTERISTIC



**ENGLISH ELECTRIC VALVE CO. LTD.**  
CHELMSFORD ESSEX, ENGLAND TECHNICAL PUBLICATIONS

Printed in England



# HIGH VACUUM RECTIFIER

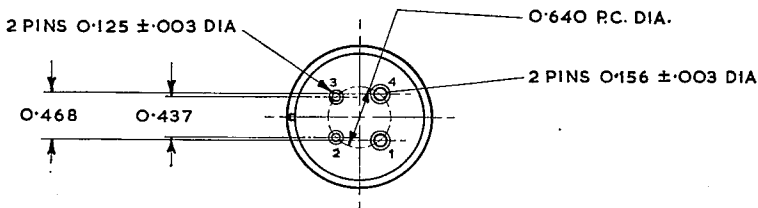
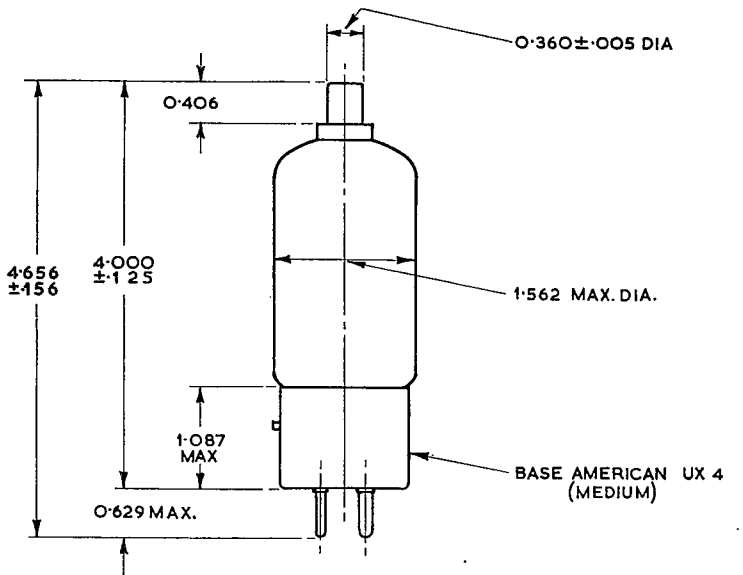
# 3B24W

(A239)

November 1957 Page 3

## OUTLINE

71



ALL DIMENSIONS IN INCHES

PIN	ELEMENT
1	FILAMENT CENTRE TAP
2	FILAMENT
3	NO CONNECTION
4	FILAMENT
CAP	ANODE

**ENGLISH ELECTRIC VALVE CO. LTD.**  
CHELMSFORD ESSEX, ENGLAND TECHNICAL PUBLICATIONS

Printed in England