

JETEC TYPE DESIGNATION REGISTRATION FORM

TR TUBES

Manufacturer's Designation: BL-95
JETEC Designation: 6644
Manufacturer: Bomac Laboratories, Inc.
Beverly, Massachusetts

March 12, 1957

GENERAL CHARACTERISTICS

The 6644 is a broad band TR tube designed to effectively decouple the receiver from a common transmitting and receiving antenna during a period of transmission. It is an integral cavity type. Its operational band is from 8490 to 9578 megacycles.

ELECTRICAL DATA-TYPICAL VALUES

Operational Band	
VSWR 1.9 maximum	8490 to 9578Mc/sec.
VSWR 1.4 maximum	8565 to 9487Mc/sec.
Ignitor Ignition Time (max.)	5 sec.
Ignitor Voltage Drop at $I_i=100\mu\text{Adc}$	200-375 volts
Spike Leakage Energy (max.)	0.2 ergs
$F=9000\text{Mc}$; $p_o=40\text{kw}$; $t_{p1}=1.0\mu\text{s}$;	
$t_{p2}=0.5\mu\text{s}$; $p_{rr}=1000\text{pps}$; $I_i=100\mu\text{Adc}$	
Flat Leakage Power (max.)	60 mw
(See Spike Leakage for test conditions)	
Insertion Loss (max.) at 9000Mc. and $I_i=0$	0.7 db
Ignitor Interaction (max.) at 9000Mc. and $I_i=100\mu\text{Adc}$	0.2 db
Recovery Time (max.) at 100kw peak 3 db down	1.5 μs

MECHANICAL DATA-GENERAL

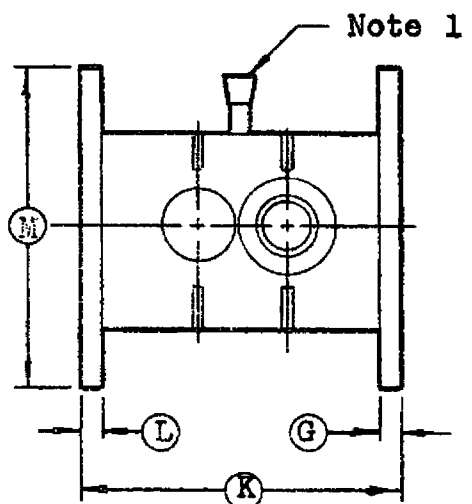
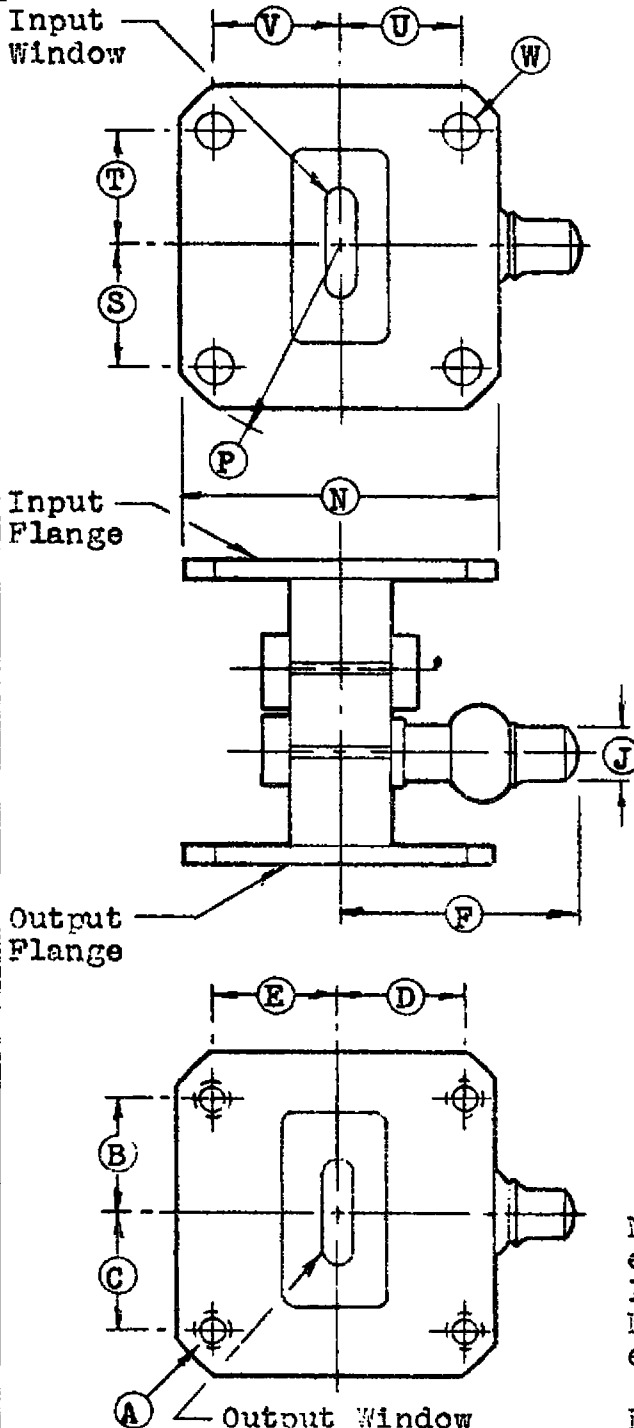
Mounting Position	Any
Weight, approximately	4 ounces

ABSOLUTE MAXIMUM RATINGS

Transmitter Peak Power	100kw
Transmitter Average Power	100W
Ignitor Current	200 μAdc

OUTLINE DRAWING

As per attached drawing dated 6-22-56



Ref.	Dimension
A*	#C-32NC-2-4 Holes
B*	0.610±.002
C*	0.610±.002
D*	0.640±.002
E*	0.640±.002
F*	1-5/8 Max.
G**	0.093±.010
J**	0.250
K	1.555±.010
L**	0.093±.010
M**	1-5/8
N**	1-5/8
P**	1-1/16 Rad.
S*	0.610±.002
T*	0.610±.002
U*	0.640±.002
V*	0.640±.002
W*	#13(.1095) Drill 4 Holes

Note 1:- Exhaust tube must not extend beyond flanges more than 1/4".

Note 2:- Silver plate 100 .SI or equivalent.

Note 3:- End flanges shall be parallel planes flat within .006

when measured within the area between concentric circles of 1-1/4 and 1-9/16 diameter. The area outside of 1-9/16 diameter may measure less than the minimum measure more than .001 above the maximum measured dimension.

Note 4:- Applies to 6035 only, in place of note 3. Tube flanges shall be parallel planes within .006 measurements shall be made between circles of 1 3/16 and 1 5/8 dia. They may deviate on the minus side (flanges closer together) by an additional .004".

SPECIFICATION SHEET		BOMAC LABORATORIES INC SALEM ROAD BEVERLY, MASSACHUSETTS
Outline		
6644/BL-95, 1B63A, 1B63E, 6035		6-22-56 clr