

HIGH VOLTAGE HIGH VACUUM DIODE

DESCRIPTION

The Central 7132/XD-2 is a water cooled hard tube diode specifically designed for rectifier, charging and shunt diode service up to 40Kv peak inverse voltage. The tube design features a special thoriated tungsten filament capable of high peak currents and long life. The external anode allows for high anode dissipation ratings and efficient water cooling through its specially designed integral jacket. The 7132/XD-2 can dissipate 5Kw continuously at a water flow of 3 gpm.

SPECIFICATIONS

PHYSICAL

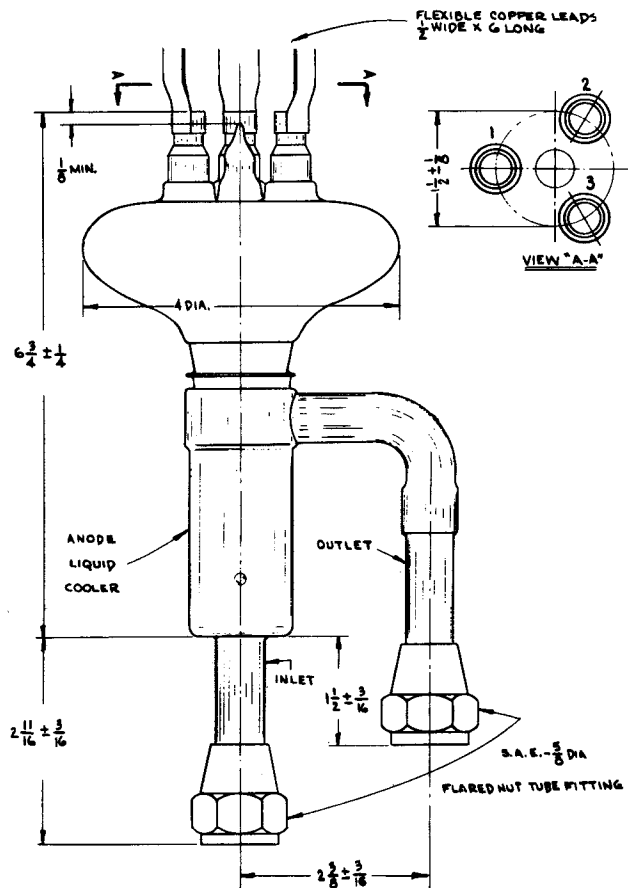
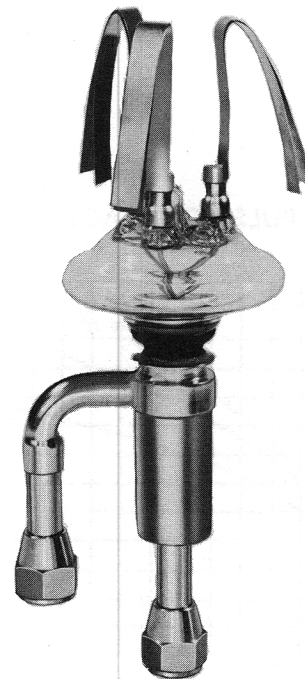
Overall Length 9⁷/₁₆ inches
Overall Diameter 4 inches
Weight 1¹/₂ pounds (approx.)
Mounting Position Vertical
Type of Cooling Water
Water Flow 3 gpm (minimum)
Max. Outlet Temperature 70° C
Max. Glass Seal Temperature 180° C

ELECTRICAL (RECTIFIER)

Filament Special Thoriated Tungsten
Filament Voltage 13 Volts A.C.
Filament Current 36 Amperes
Starting Filament Surge
Current 80 Amperes (max.)
Peak Inverse Voltage 40,000 Volts (max.)
Anode Current 3 Amperes
Peak Anode Current 15 Amperes

ELECTRICAL (CLIPPER, SHUNT or CHARGING DIODE)

Filament Voltage 14.5 Volts A.C. (clipper)
13 Volts A.C. (charging)
Filament Current 40 Amperes (clipper)
36 Amperes (charging)
Starting Filament Surge Current . 80 Amperes (max.)
Peak Inverse Voltage 40,000 Volts (max.)
Anode Current (RMS) 6 Amperes
Peak Anode Current 150 Amperes (clipper)



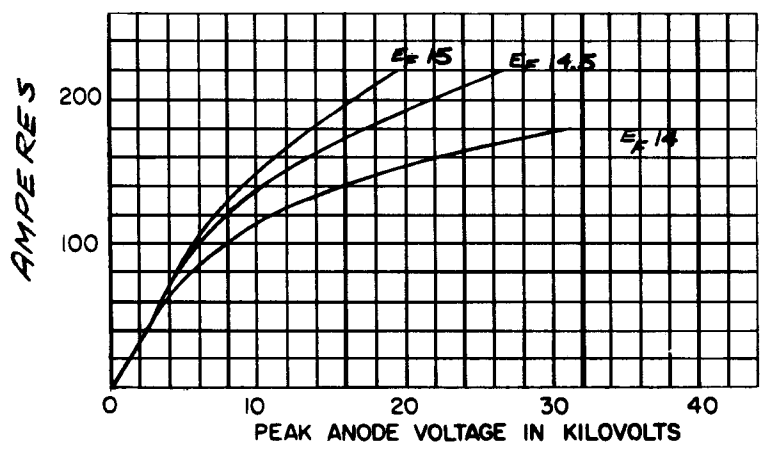
HIGH VOLTAGE
HIGH CURRENT
DIODE
TYPE
7132/XD-2
 Anode Dissipation
 5 Kw

Central ELECTRONIC

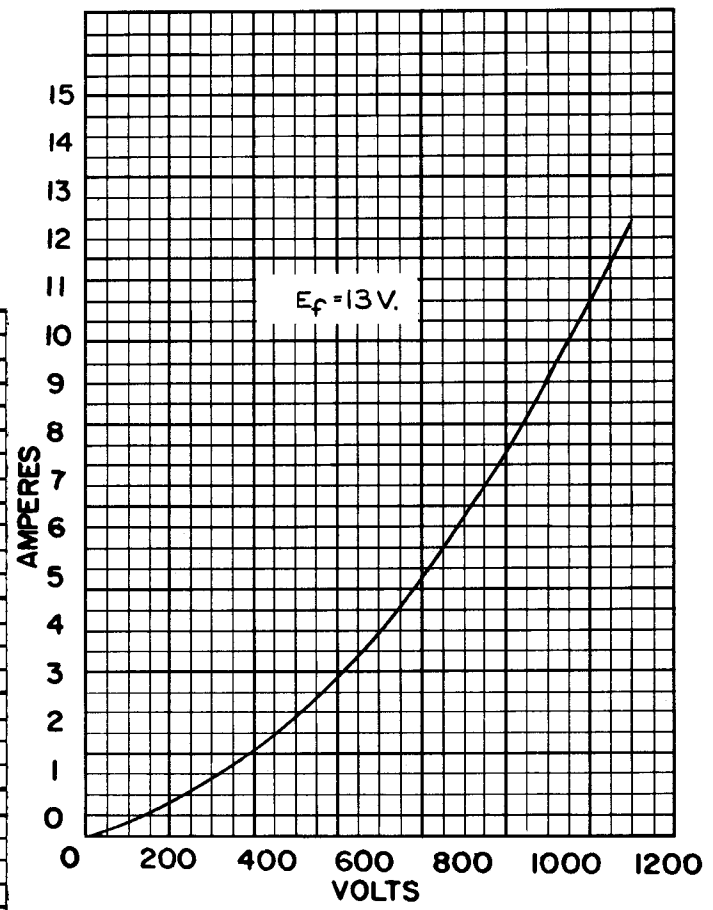
MANUFACTURERS

DENVILLE, NEW JERSEY

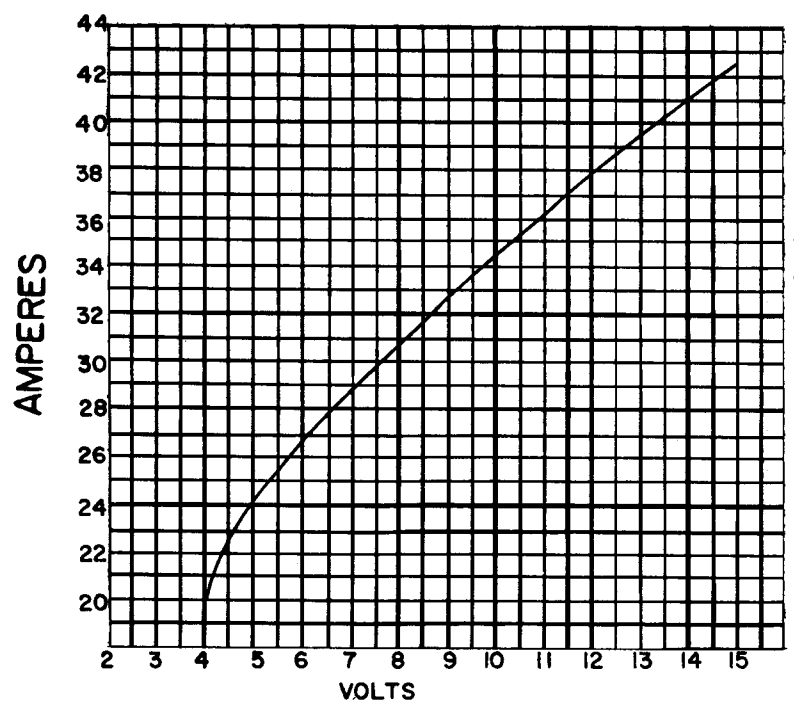
PULSE CHARACTERISTICS



AVERAGE ANODE CHARACTERISTICS



FILAMENT CHARACTERISTICS



DIVISION OF NUCLEAR CORPORATION OF AMERICA