

ZP-1057
OTI-92
Page 2
9-14-64

CW RADIO-FREQUENCY OSCILLATOR - CLASS C

Maximum Ratings

DC Plate Voltage	1750	Volts
DC Plate Current	0.300	Amperes
DC Grid Voltage	-150	Volts
DC Grid Current	0.050	Amperes
Plate Dissipation	300	Watts

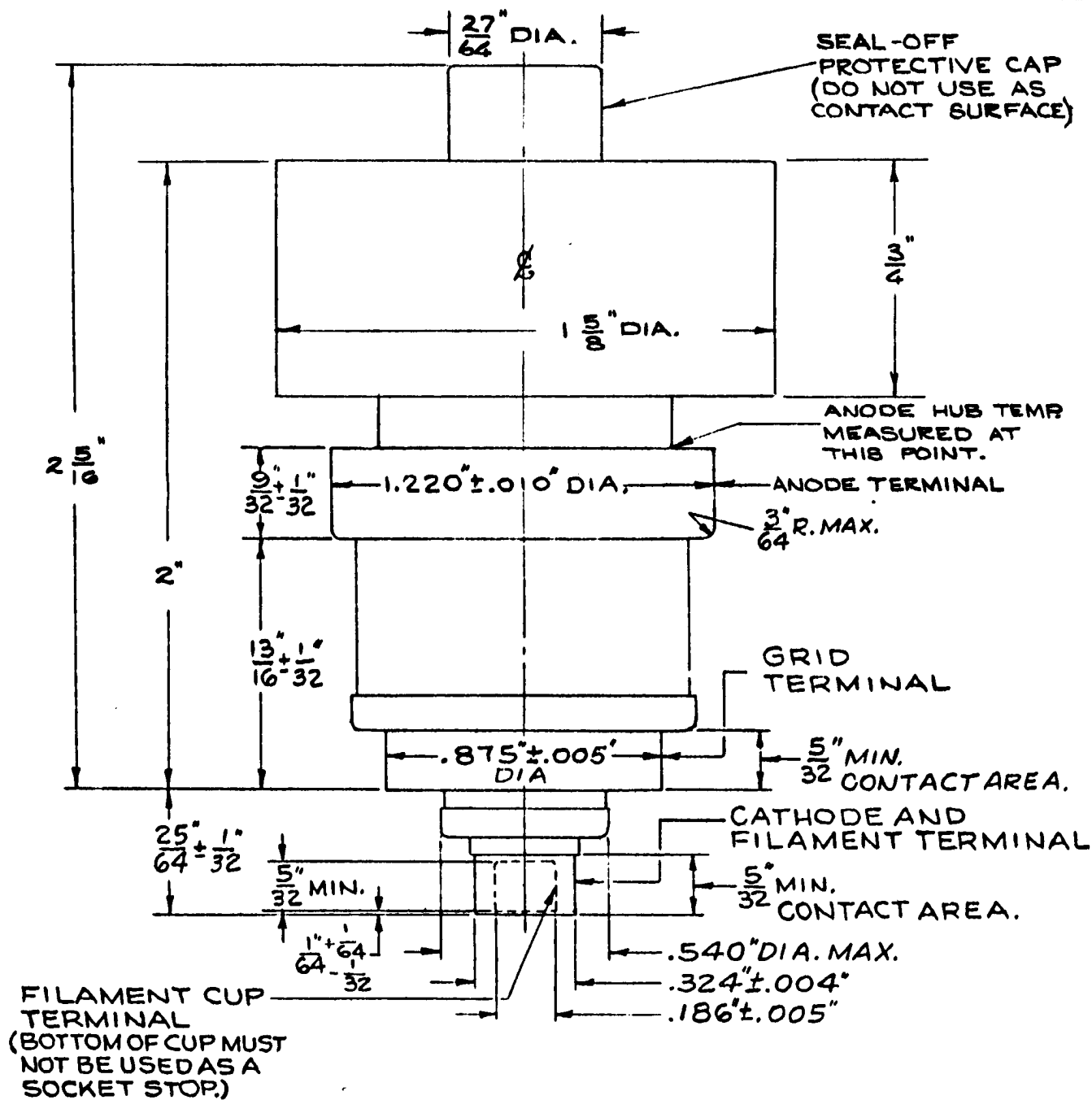
Typical Operation

Grounded-Grid Circuit at 1200 Megacycles, $3/4\lambda$ Output

DC Plate Voltage	1500	Volts
DC Plate Current	0.275	Amperes
DC Grid Voltage	-125	Volts
DC Grid Current	0.045	Amperes
Power Output, approximate (useful)	200	Watts

* Because the temperature of the cathode is increased by back bombardment of electrons at UHF, required heater voltage for optimum life decreases with increasing frequency. The amount of heater voltage reduction is dependent on operating conditions. However, this voltage should not be less than 5.5 volts.

2 Forced-air cooling to be provided before and during the application of any voltages to limit the anode hub temperature to the value specified.



TUBE DEPARTMENT
GENERAL  ELECTRIC
Owensboro, Kentucky