

—Standard Valves—

4020-A Valve
-B Valve
-C Valve

4020-A, 4020-B, 4020-C VALVES

TRIODES.

SPECIFICATION.

Cathode.

Oxide coated filament.
Constant current type.

Base.

4020-A Medium 4-pin bayonet thrust.
4020-B Standard British 4-pin.
4020-C Medium 4-pin bayonet thrust, grid connected to top cap.

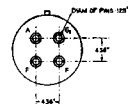
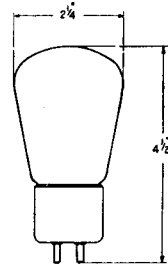
Dimensions.

	4020-A	4020-B	4020-C
Overall length	ins. $4\frac{1}{2}$	$4\frac{9}{16}$	5
	cms. 11.4	11.6	12.7
Maximum diameter—	ins. $2\frac{1}{4}$	$2\frac{1}{4}$	$2\frac{1}{4}$
	cms. 5.7	5.7	5.7
	Net weight	lbs. 0.14	0.14
	gms. 65	65	65

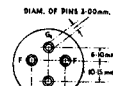
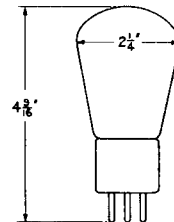
Constants.

Filament current	0.25 amps.		
Nominal filament voltage	2 volts		
* Impedance	50,000 ohms		
* Amplification factor	30		
* Mutual conductance	0.6 mA per volt.		
Grid-anode capacity	4020-A	4020-B	4020-C
	6.3	6.3	7.9 $\mu\mu\text{F}$.
Anode-filament capacity	4.4	4.4	5.3 $\mu\mu\text{F}$.
	Grid-filament capacity	6.2	6.2

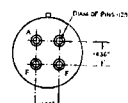
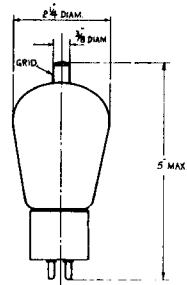
* at anode current of 0.8 mA.



4020-A



4020-B.



4020-C

4020-A Valve
 -B Valve
 -C Valve

—Standard Valves—

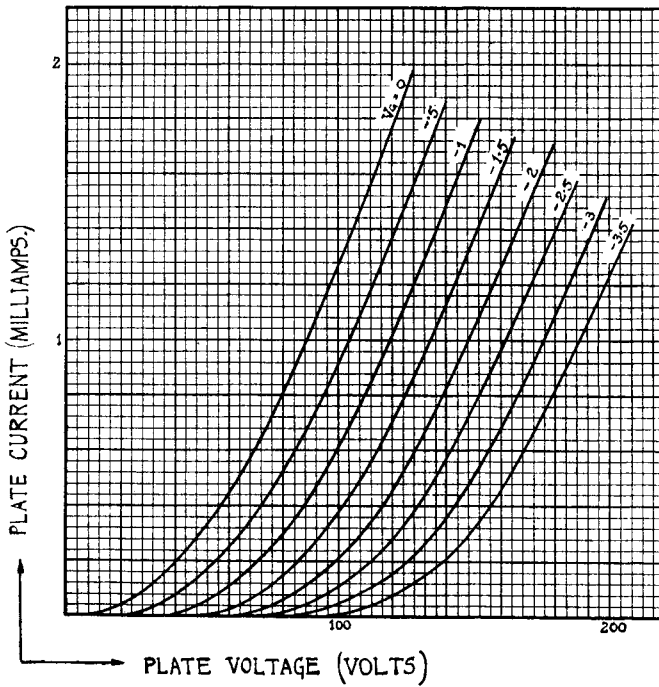
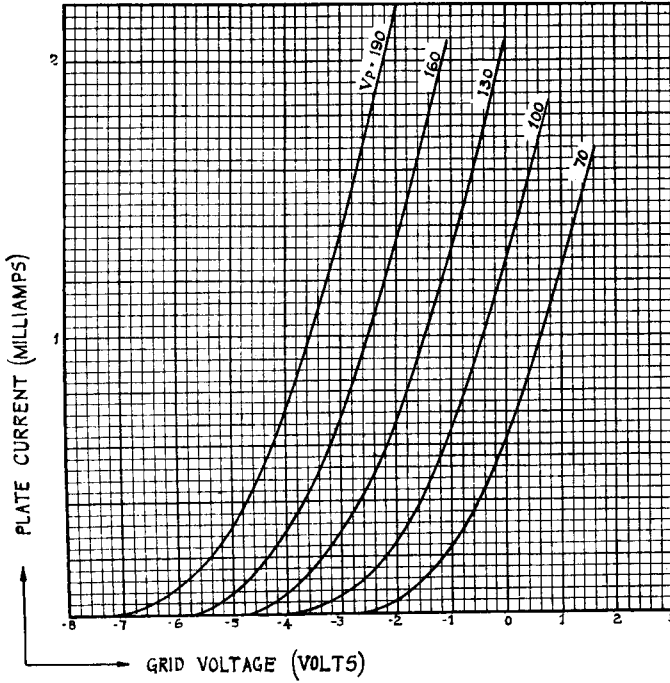
TYPICAL OPERATING CONDITIONS.

Anode voltage volts	Grid Bias volts	Anode current mA.	Anode Resistance ohms	Load ohms	Output voltage peak volts	Total Harmonic db below fundamental
130	—1	1.26	43,000	43,000	18.5	34.5
				86,000	20.3	37
				129,000	20.6	37
130	—1.5	0.92	46,000	46,000	21.4	30
				92,000	25.4	35.3
				138,000	26.2	37
130	—2	0.64	52,000	52,000	12.1	21.7
				104,000	14.8	28
				156,000	17.6	30.5
160	—1.5	1.63	41,000	41,000	24	35.2
				82,000	30.2	38.2
				123,000	35	38.5
160	—2	1.28	44,000	44,000	37	29
				88,000	42	35
				132,000	45.6	36

Note :—Decreasing the output by N db below the value given in the table improves the harmonic level by N db.

—Standard Valves—

4020-A Valve
-B Valve
-C Valve



V.4020-ABC.2
Nov. 1937

PRINTED IN
ENGLAND