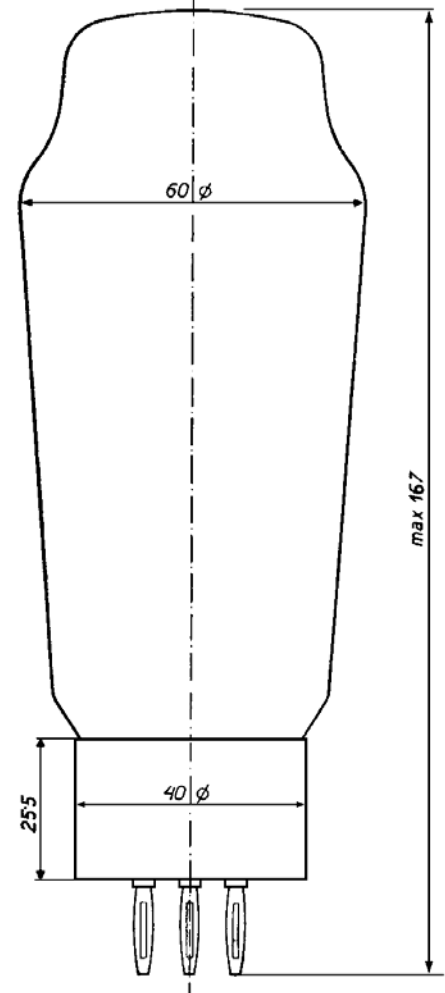
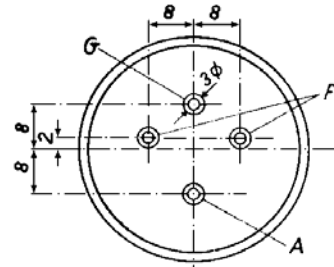
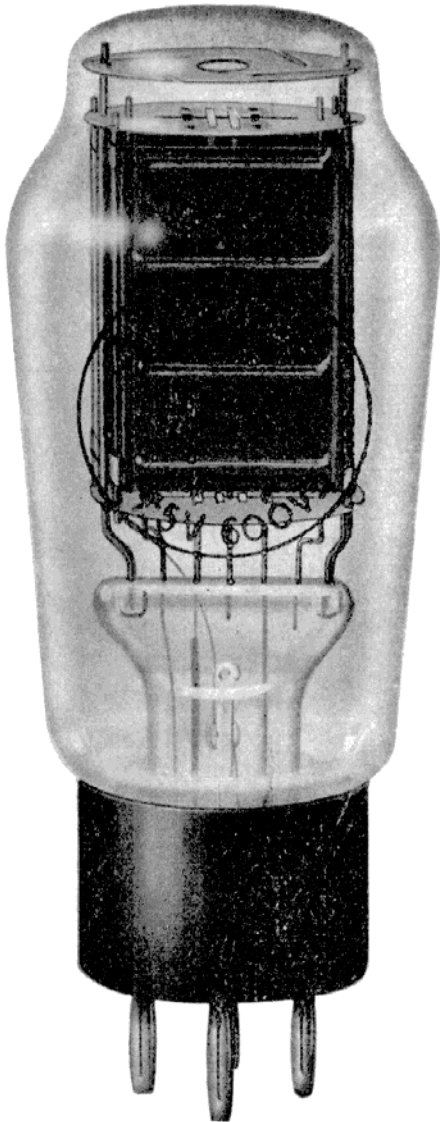




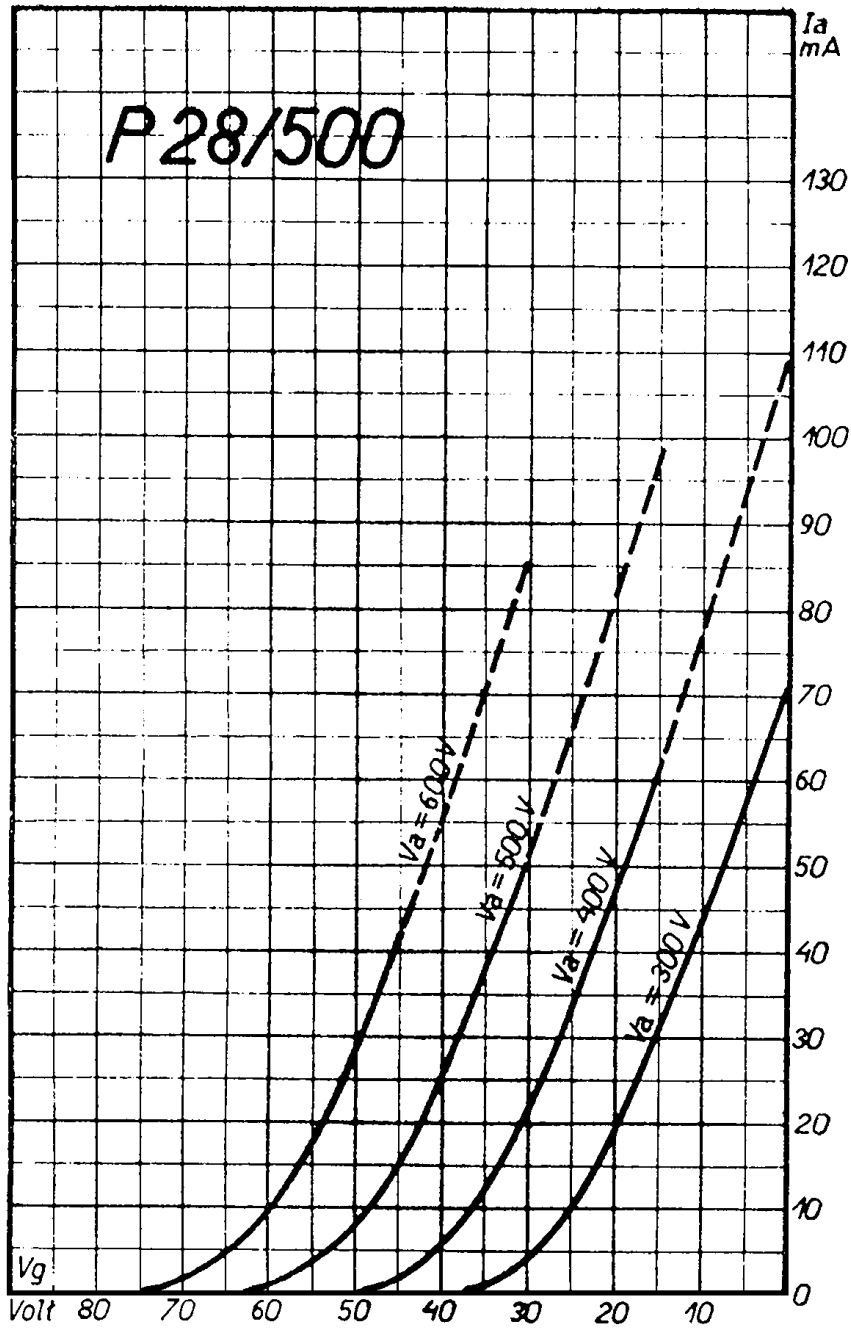
**Kraftverstärkerröhre
mit Oxydheizfaden**

Gewicht cca 100 g

P 28/500



Socket: F 44
Lieferbar auch mit Socket F 49



V_f = 7.5 Volt
 I_f = 1.25 Amp.
 $V_{a \max}$ = 600 Volt
 S = 2.7 mA.V
 g = 9
 R_i = 3350 Ohm
 $W_{a \max}$ = 35 Watt

C_{ga} = 12 $\mu\mu F$
 C_{gk} = 5.5 "
 C_{ak} = 3 "