

ADMIRALTY SIGNAL AND RADAR ESTABLISHMENT

Specification AD/OV539 incorporating MIL-E-1/21 Issue No. 1 dated 11. 6. 56. To be read in conjunction with K1006	<u>SECURITY</u>	
	<u>Specification</u> Unclassified	<u>Valve</u> Unclassified

<u>TYPE OF VALVE:</u> T.R. Switch Separate Cavity Type.	<u>MARKING</u> See K1001/4
<u>PROTOTYPE:</u> 1B23	
<u>RATINGS</u>	<u>DIMENSIONS</u> See Drawing on Page 3
Max. Open Circuit Ignitor Voltage (V) -1000	
Min. Open Circuit Ignitor Voltage (V) -800	
Max. Ignitor Current ( $\mu$ A) 200	
Nominal Operating Frequency (Mc/s) 94.5	

NOTE

A. All limiting values are absolute.



NOTICE: When Government drawings, specifications, or other data are used for any purpose other than in connection with a definitely related Government procurement operation, the United States Government thereby incurs no responsibility, nor any obligation whatsoever, and the fact that the Government may have accepted, or caused to be accepted, in whole or in part any drawing, specification, or other data does not in any way be regarded as implication or otherwise as in any manner licensing the holder or any other person or corporation, or conveying any rights or permission to manufacture, use, or sell any patented invention that may in any way be related thereto.

- Note 4:** When the tube is fired by the application of high power in cavity per drawing 162-JAN or approved equivalent which is at resonance, the transmitted power obtained shall be less than that of a standard tube filled with pure hydrogen to a pressure of 25 millimeters of mercury. The power level at the input shall be sufficient to fire the rf gap of the tube and to insure that the measurement is being made on the flat part of the "power in the gap vs. leakage power" characteristic. If the main discharge gap does not fire it is caused to be fired by a short application of ignitor voltage.
- Note 5:** With the tube operating as outlined in Note 4, a small portion of the tube envelope shall be cooled by the application of solid CO<sub>2</sub>. The ratio of the minimum reading of the output meter (Po2) to that obtained before the application of solid CO<sub>2</sub> (Pol) shall be less than the given value, and the Final reading shall be less than the initial one.
- Note 6:** The specified life is based on ignitor life only. This will be reduced if the tube is operated under full rated rf conditions.
- Note 7:** Referenced specification shall be of the issue in effect on the date of invitation for bids.

APPROVED 5 Feb 1953 REVISED

CUSTODIANS: Army - Signal Corps Navy - Bureau of Ships Air Force	<b>SPECIFICATION SHEET</b>		MIL-E-1/21  SHEET 2 OF 3
	GAS SWITCHING TUBE, TR, SEPARATE CAVITY TYPE		
PROCUREMENT SPECIFICATION MIL-E-1	1B23		

Other interest: Army - GNOT Navy - AMCRSQS

NOTICE: When Government drawings, specifications, or other data are used for any purpose other than in connection with a definitely related Government procurement operation, the United States Government thereby incurs no obligation whatsoever, and the fact that the Government may have furnished, furnished, or in any way supplied the said drawings, specifications, or other data shall not be construed as in any manner licensing the holder or any other person or corporation, or conveying any rights or permission to manufacture, use, or sell any patented invention that may in any way be related thereto.

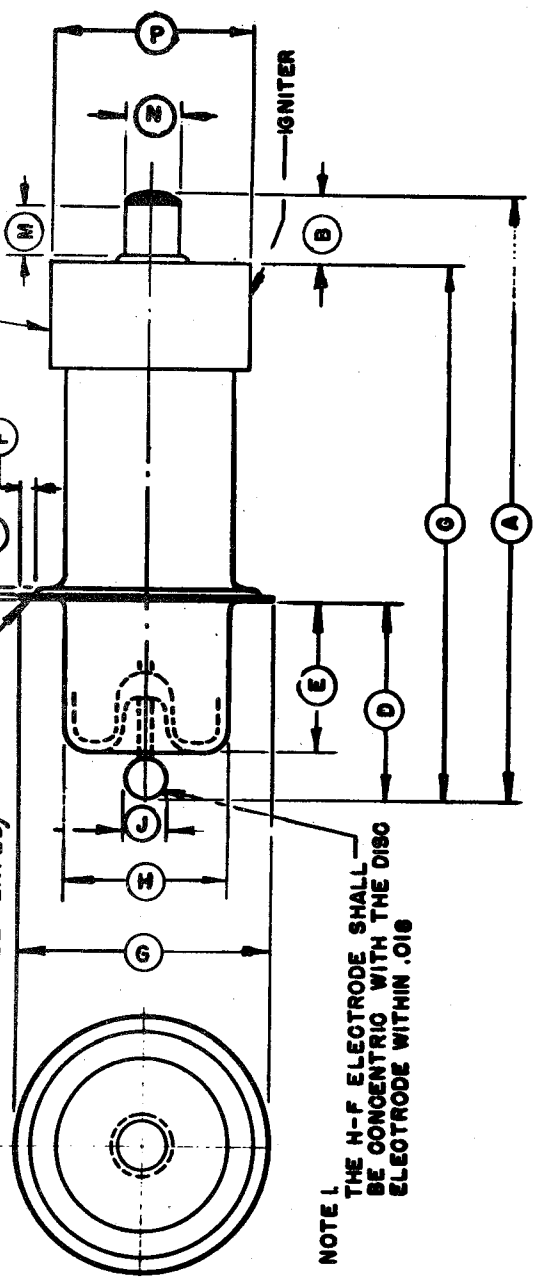
REF	DIMENSIONS
A	** $2\frac{1}{4} \pm \frac{3}{16}$
B	** $\frac{1}{2}$
C	$2\frac{1}{4} \pm \frac{1}{16}$
D	$\frac{1}{16} \pm \frac{1}{32}$
E	$\frac{1}{16} \pm \frac{1}{32}$
F	$\frac{1}{16} \pm \frac{1}{32}$
G	$\frac{1}{16}$ MIN
H	** $1 \pm \frac{1}{32}$ DIA
J	** $1.87 \pm .002$
K	** $.008$
L	** $\frac{1}{16}$
M	** $.220$ MIN
N	** $.250 \pm .004$
P	** $.930$ MAX $.896$ MIN

NOTE 4.  
CONTACT PORTION OF DISC MEASURED RADIALLY WHICH MUST BE FREE FROM SPLITS OR TEARS, MUST BE SMOOTH AND MUST BE PERCEPTIBLY FLAT.

NOTE 2  
THE BASE SHALL BE CONCENTRIC WITH THE DISC ELECTRODE WITHIN .040

\*\* NOTE 3  
CONTACT DISC EXTERNAL SURFACES AND H-F ELECTRODE SHALL BE GOLD PLATED MIN .0051 OR SILVER PLATED 15 MS1 ON EXTERNAL SURFACES (EDGES OF DISC NEED BE PLATED)

NOTE 1  
THE H-F ELECTRODE SHALL BE CONCENTRIC WITH THE DISC ELECTRODE WITHIN .018



CUSTOMERS:  
Army - Signal Corps  
Navy - Bureau of Ships  
Air Force

PROCUREMENT SPECIFICATION  
MIL-E-1

## SPECIFICATION SHEET

GAS SWITCHING TUBE, TR, SEPARATE CAVITY TYPE

1B23

MIL-E-1/21

SHEET 3 OF 3

APPROVED 5 Feb 1953 REVISED